

SERIES 2: 7 OCTOBER 2015

klia2 MAINTENANCE PROGRESS

We are happy to share as at 30 September 2015, our rectification work is on schedule. As stated in the 5-year masterplan, pavement overlay works for areas impacted by water ponding in 2015 will cover 19% of total klia2 airport area. We are glad to share that as of September, progress is recorded at 83%.

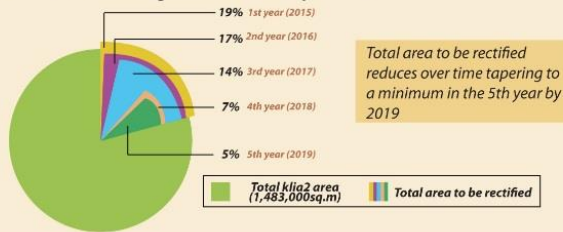
Installation of precast concrete slab for areas impacted by differential settlement has progress to 75% from 63% as reported last month. 35 out of 47 locations has been rectified.

We are glad to inform that progressive and adequate measures are in place to remedy the situation as shown in the pictures below and we reassure the public that there is no compromise on safety at klia2.

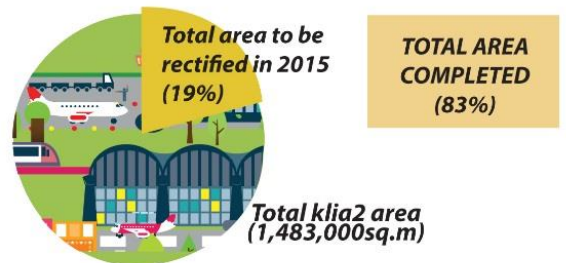
PAVEMENT OVERLAY WORKS Maintenance Masterplan & its current progress as at 30 September 2015

Our work plan is staggered over 5 years to minimise disruption to airport operations and the current progress for pavement overlaying works at bays and taxiway is at 83% completed.

PAVEMENT OVERLAY WORKS MASTERPLAN % of area to be rectified against total klia2 airport area



CURRENT PROGRESS OF PAVEMENT OVERLAY WORKS



INSTALLATION OF PRECAST SLAB Maintenance Masterplan & its current progress as at 30 September 2015

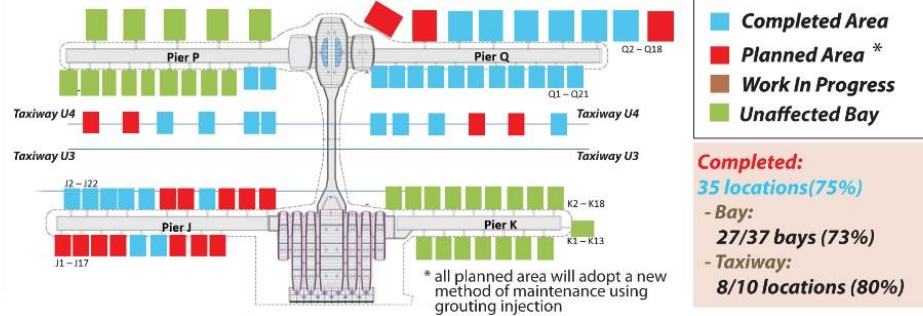
Our work plan for installation of precast slab is staggered over 2 years to minimise disruption to airport operations and the current progress for installation of precast slab at bays and taxiway is at 75% completed.

INSTALLATION OF PRECAST SLAB MASTERPLAN

Total number of locations:
2015 - 47
2016 - 7 } 54 locations

Location Type	2015	2016
Taxiway (12 locations)	10 locations	2 locations
Parking Apron (42 bays)	37 bays	5 bays

CURRENT PROGRESS OF INSTALLATION OF PRECAST SLAB



IMPROVEMENTS ACHIEVED (Examples of before & after photos as at 30 September 2015)



The previous water ponding at K18 has been overcome by full overlaying works.



Differential settlement at Q11 has been resolved by the installation of precast concrete slab.

Malaysia Airports takes our responsibility towards public safety very seriously. Thank you for your patience and understanding.