



Silent SUCCESS!

Hearing Conservation Program

Malaysia Airport (Sepang) Sdn Bhd

Factories and Machinery (Noise Exposure) Regulations, 1989

Factories and Machinery Act, 1967 (Act 139)

Occupational Safety and Health Act, 1994 (Act 514)



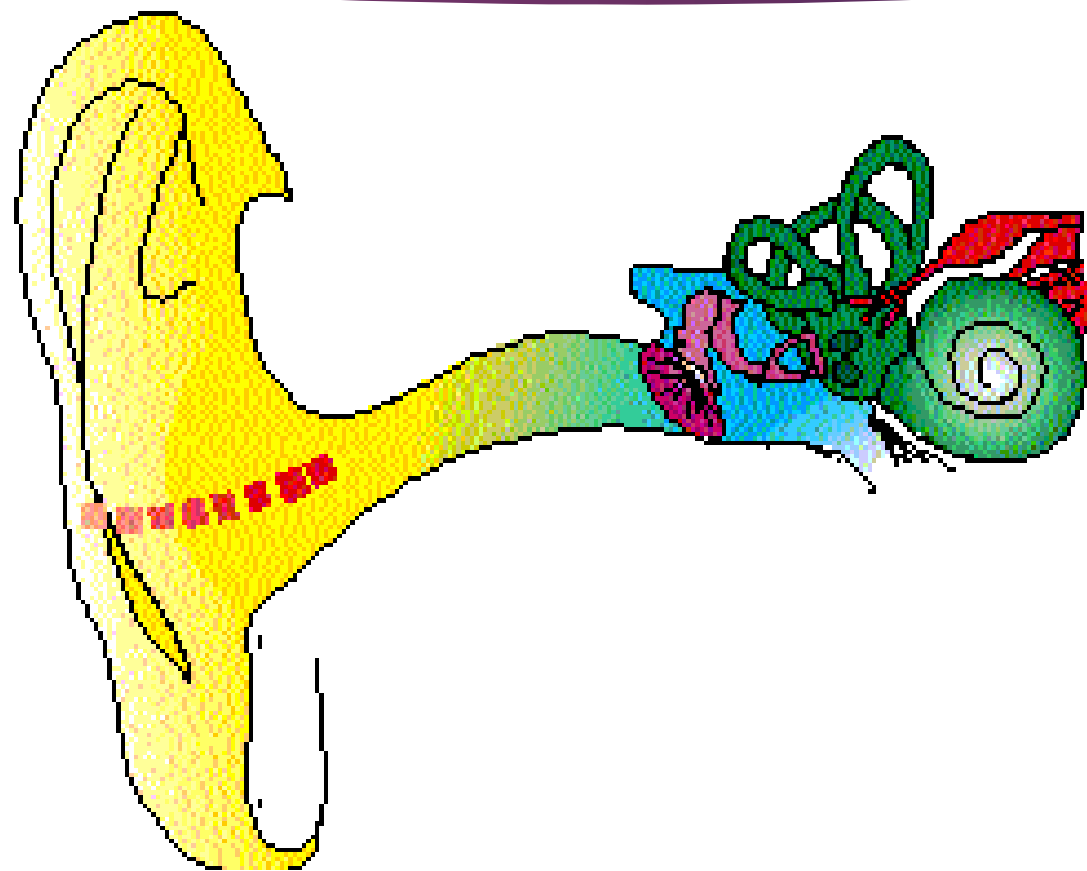
The background is a dark purple gradient. In the upper right corner, there is a vertical pink rectangular bar. Faintly visible in the background are large, stylized letters: 'W', 'A', 'Y', and '2'.

The BIG Picture

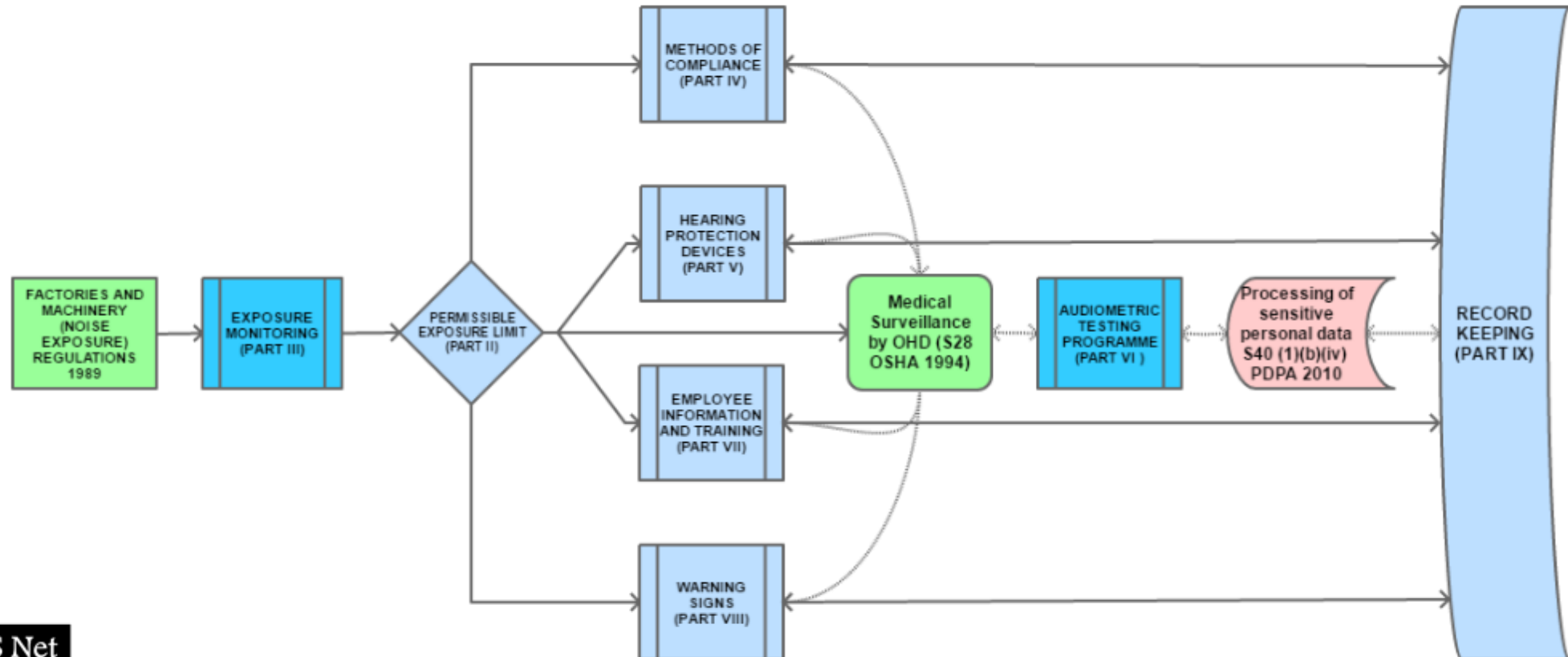


Put both your hands forward, please!

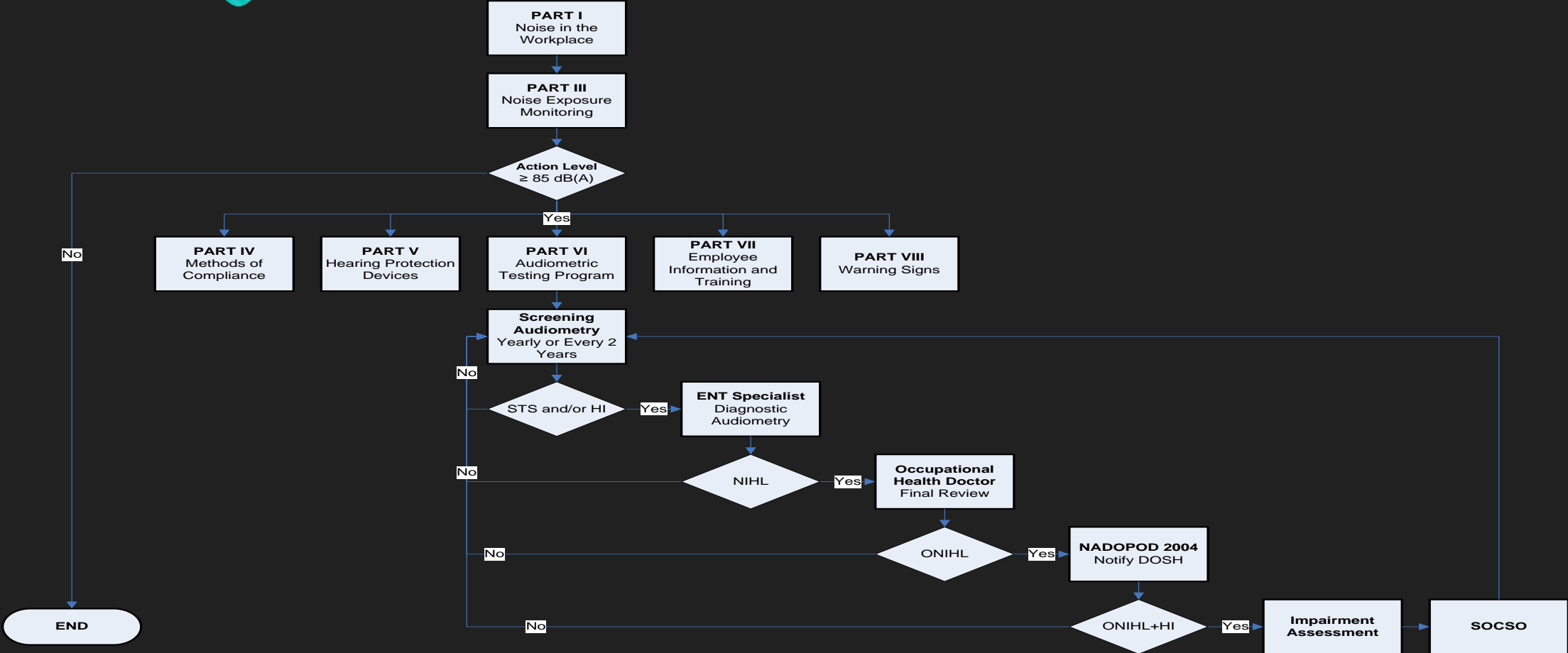
The Effects of Noise on Hearing



Hearing Conservation Program



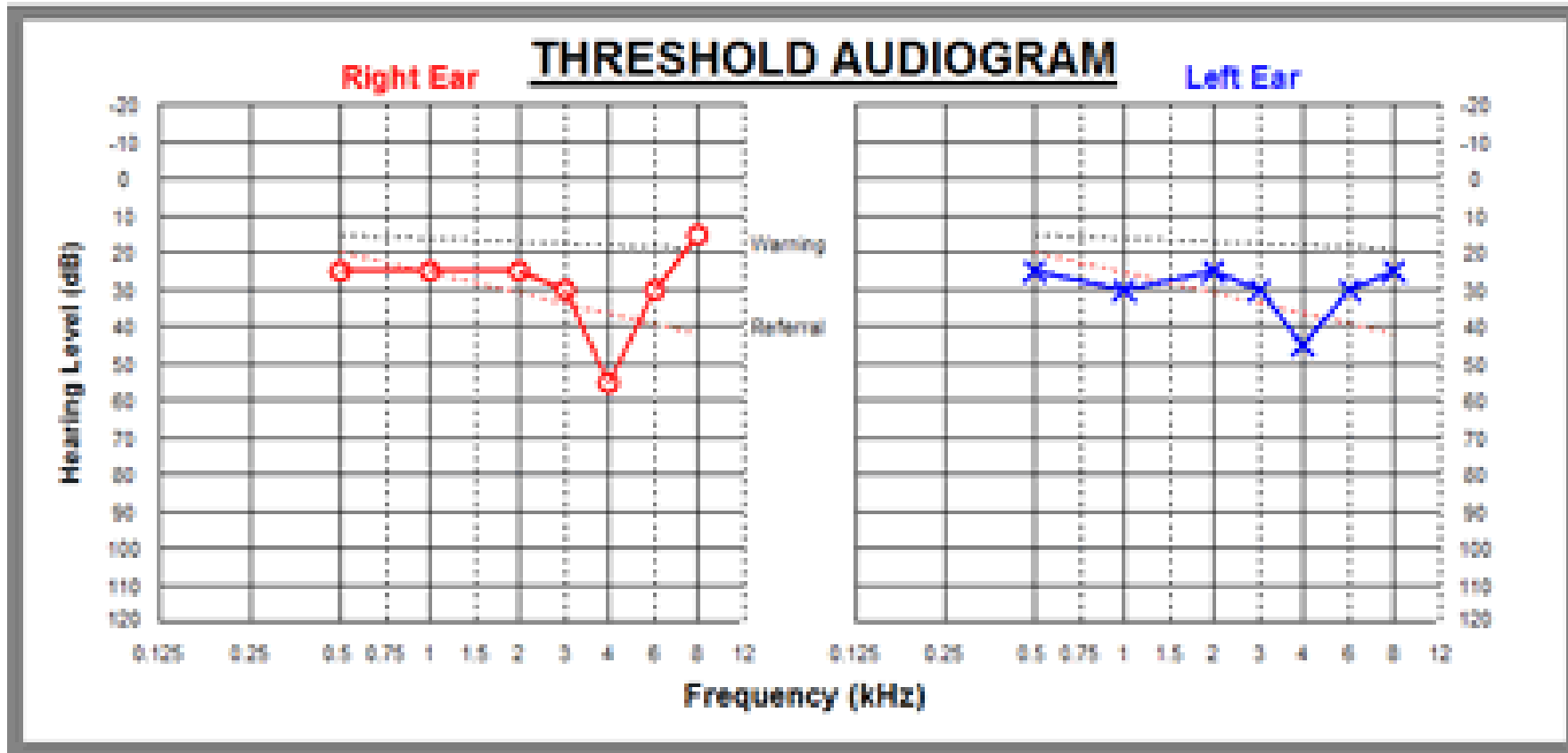
Hearing Conservation Program Flowchart



Hearing Conservation Program Elements

- Exposure Monitoring [Part III]
- Methods of Compliance [Part IV]
- Hearing Protection Devices [Part V]
- Audiometric Testing Program [Part VI]
- Employee Information and Training [Part VII]
- Warning Signs (Part VIII)
- Record Keeping [Part IX]

Occupational Noise Induced Hearing Loss



The Many Issues in Noise Monitoring & Audiometry

Managing A
Hearing
Conservation
Program

What & When is
Deafness?

Standardisation?

Competency?

False Protection

Medical
Surveillance or
Medical
Examination?

Record keeping?

Transfer of
records?

Case
investigations?

Occupational
Health Case
Management?

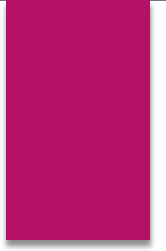
NADOPOD

SOCSSO Claims
Management?

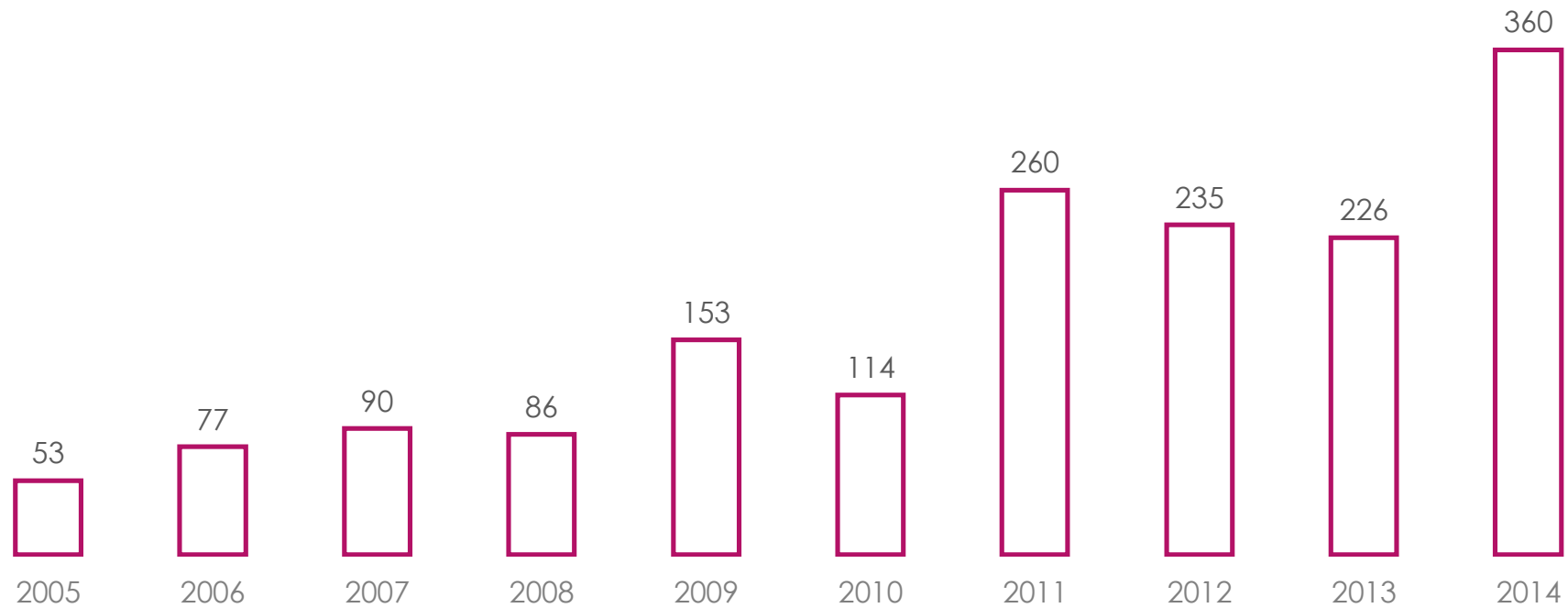
Software System
for Epidemiology

Price war?

Some
Perspective
SOCISO Annual
Report



Occupational Noise Induced Hearing Loss



Just for
Completeness
Legislations



Rule 5.1. Preliminary Hearing

- (a) In General. If a defendant is charged with an offense other than a petty offense, a magistrate judge must conduct a preliminary hearing unless:
- (1) the defendant waives the hearing;
 - (2) the government files an indictment;
 - (3) the government files an information charging the defendant with a misdemeanor;
 - (4) the defendant is charged with a misdemeanor and consents to trial;

Acts

Occupational
Safety and Health
Act, 1994 (514)

Factories and
Machinery Act,
1967 (139)

Regulations

Factories and Machinery
(Safety, Health and Welfare)
Regulations 1970

Occupational Safety and
Health (Notification of
Accident, Dangerous
Occurrence, Occupational
Poisoning and
Occupational Disease)
Regulations 2004

Factories and Machinery
(Noise Exposure) Regulations
1989

Guidelines

Guidelines on
Occupational Health
Services 2005

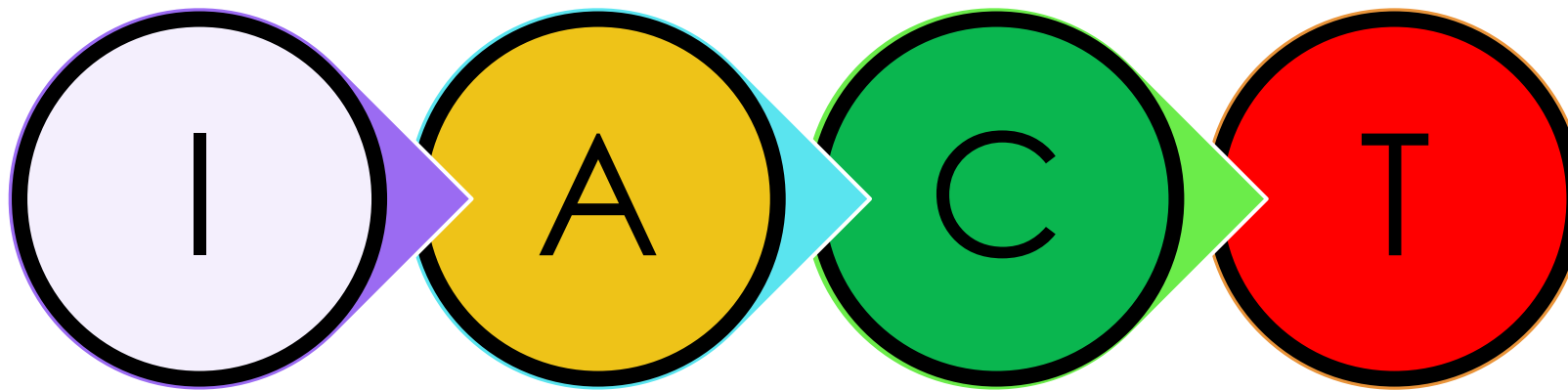
Guidelines on
Occupational Safety
and Health
Management Systems
(OSHMS) 2014

What we really
have to do?
Hearing
Conservation
Program





Hearing Conservation Program



- Proactive
 - HRA
- Reactive
 - Complaints of Hearing Loss
 - MC, LTI

- **IEEM**
- **NEM**

- Screening Pure Tone Air Audiometry
- Hearing Conservation Program Training, Talks, Seminars, Briefing

- Occupational Noise Induced Hearing Loss
- Occupational Health Case Management

Factories and Machinery (Noise Exposure) Regulations 1989

Yearly



R22(a) Employee Exposure Monitoring

- R5(1) $\geq 90\text{dB(A)}$ or \geq First Schedule
- R5(2) 115dB(A)



R22(b) Baseline Audiogram

- Hearing Impairment
- Standard Threshold Shift (NIHL pattern?)

2 yearly



R22(c) Employee Exposure Monitoring

- $\geq 85\text{dB(A)}$ but $< 90\text{dB(A)}$

Medical Surveillance on Noise

Screening Audiometry

- Baseline
- Periodic
 - Annually
 - 2 yearly
- Retest



Normal?! (Hearing loss!?)

Standard Threshold Shift

Hearing Impairment

± NIHL pattern

Audiogram
Interpretations


•Standard Threshold Shift

- means an average shift of **more than 10 dB** at frequencies of 2000, 3000 and 4000 Hz relative to the baseline audiogram in either ear;

Hearing Impairment

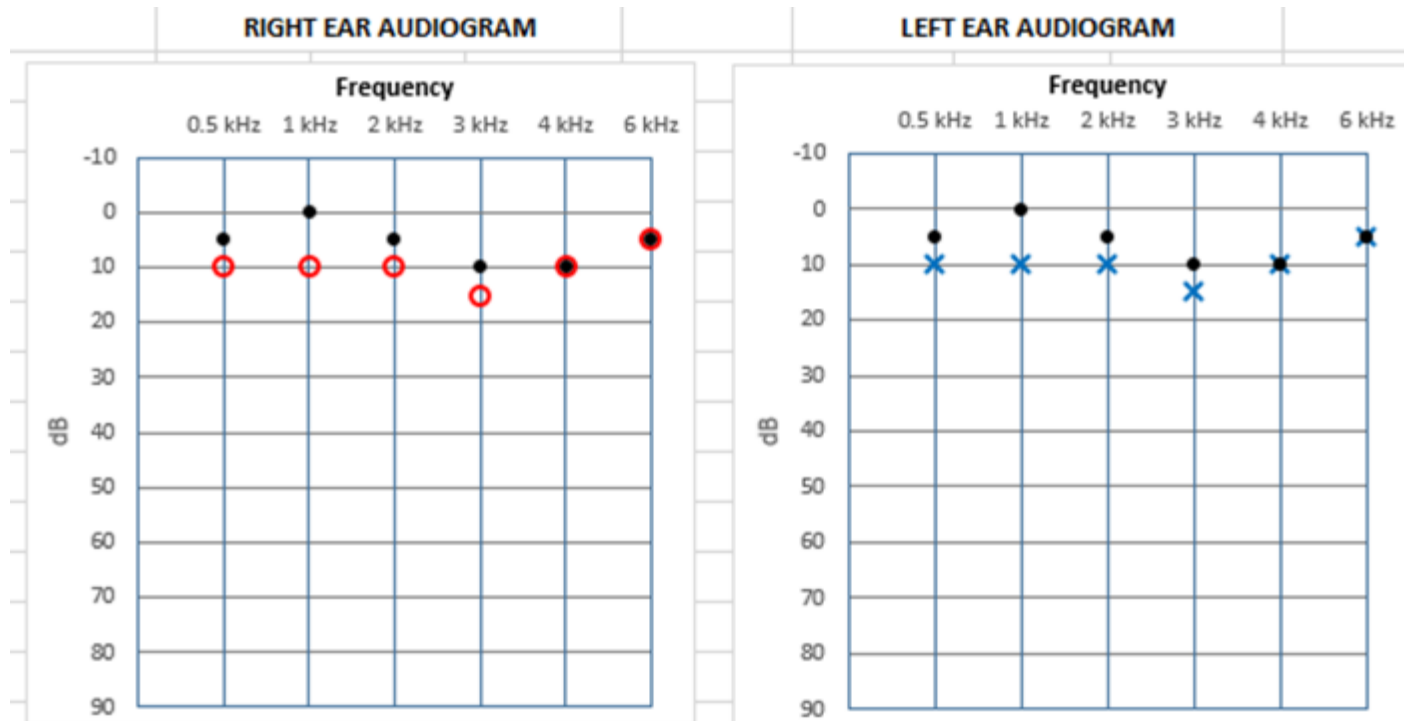
- means the arithmetic average of the permanent hearing threshold level of an employee at 500, 1000, 2000 and 3000 Hz which is shifted by **25 dB or more** compared to the standard audiometric reference level

R2. Interpretation

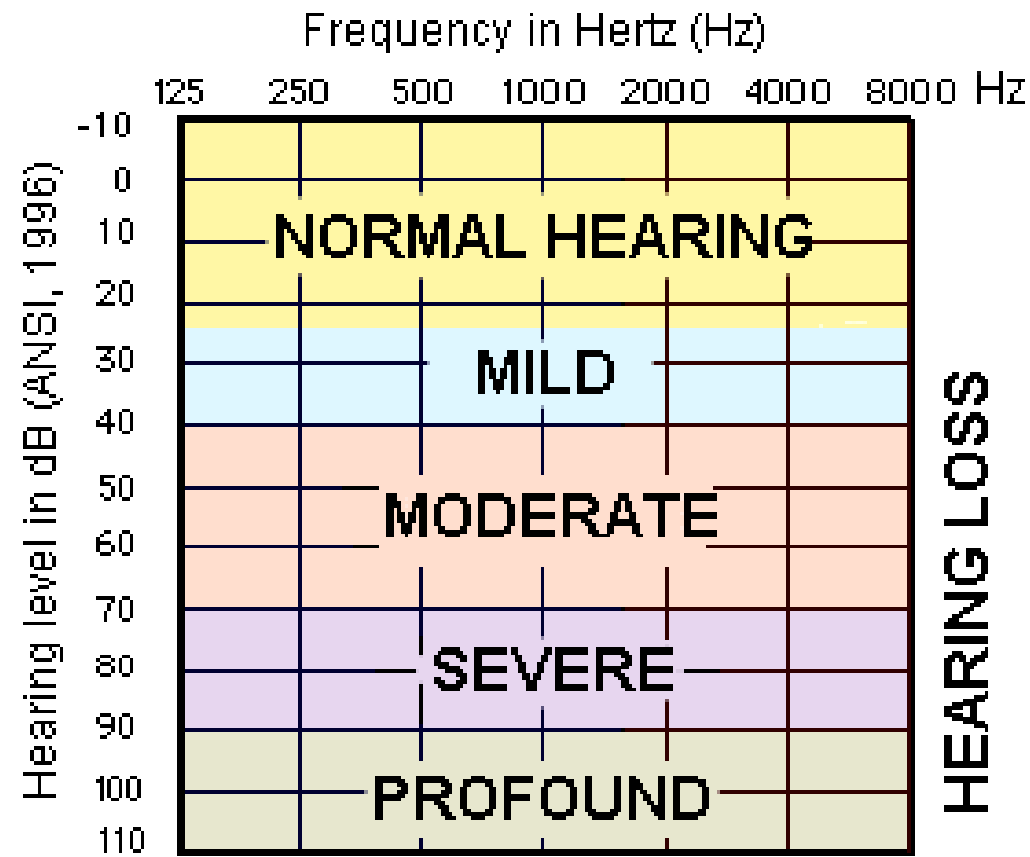


Audiogram Chronology of ONIHL of a Worker

Normal?!

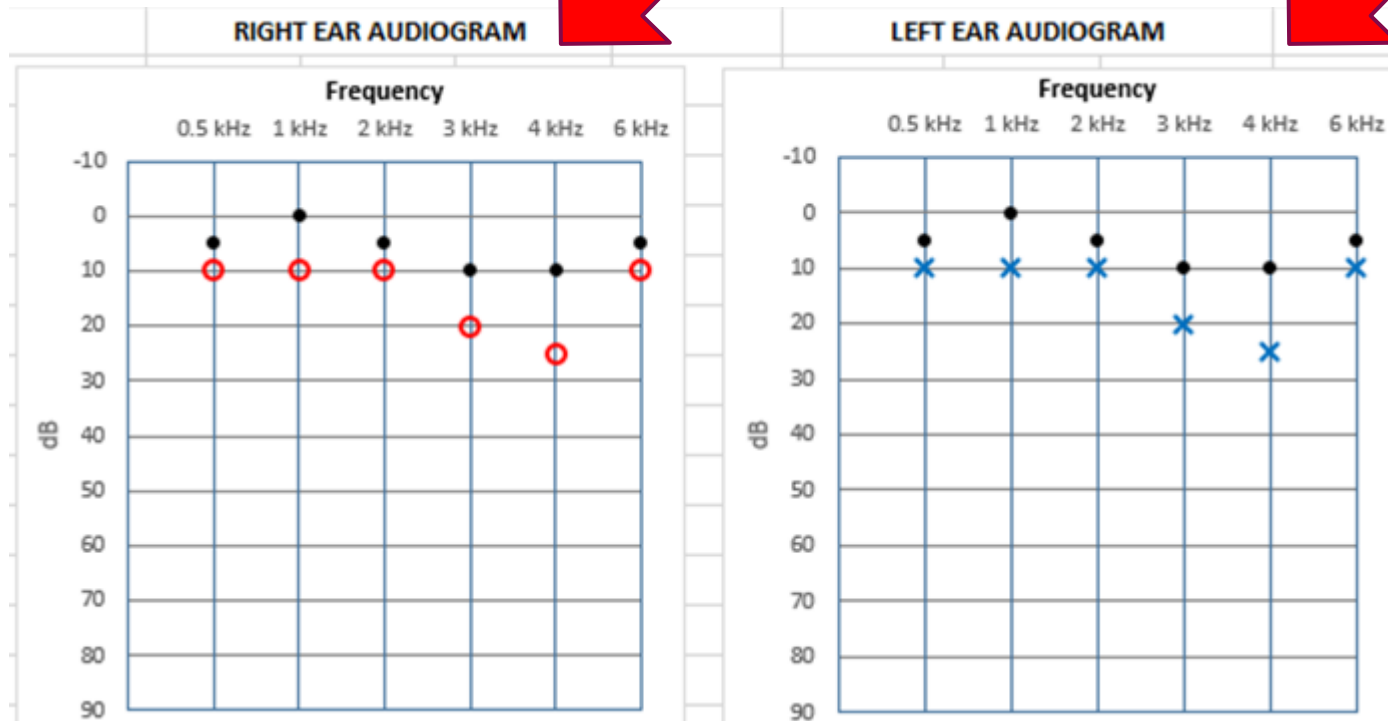


AUDIOGRAM

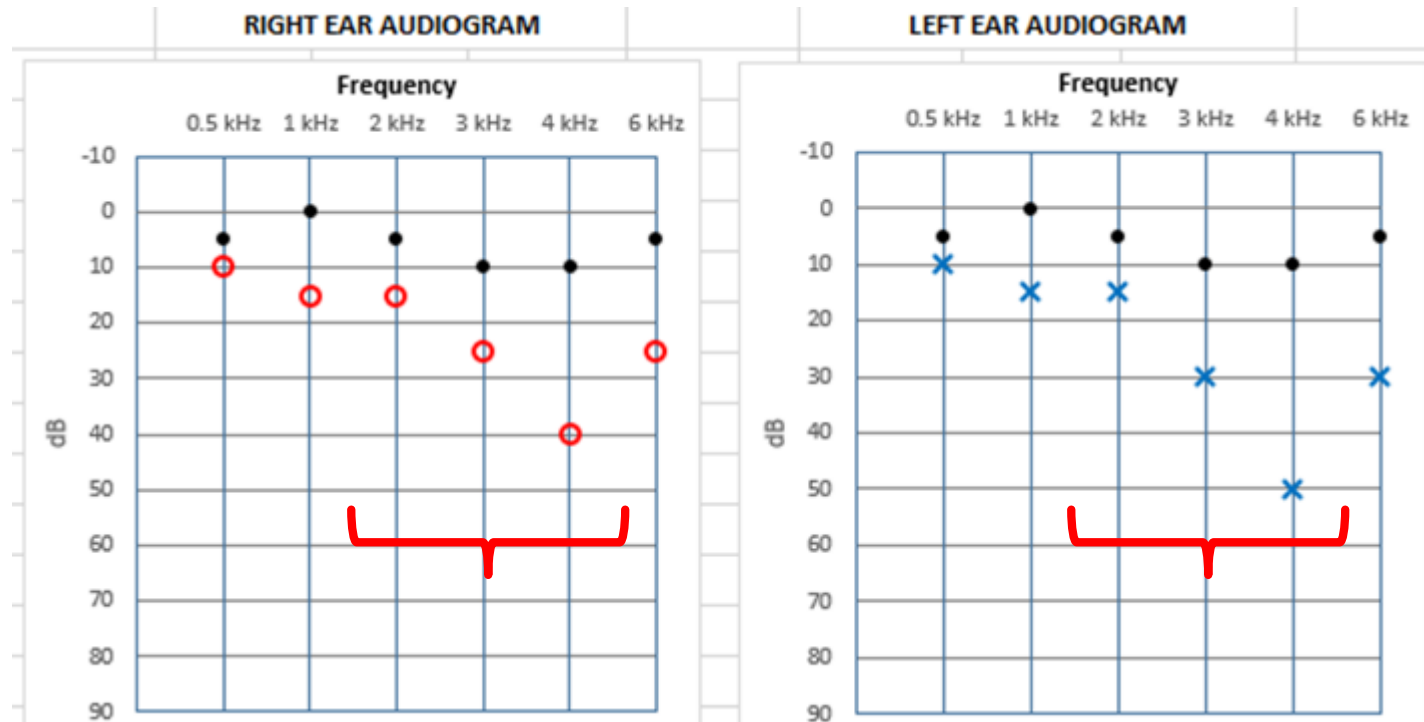


An example of one classification system
for degree of hearing loss

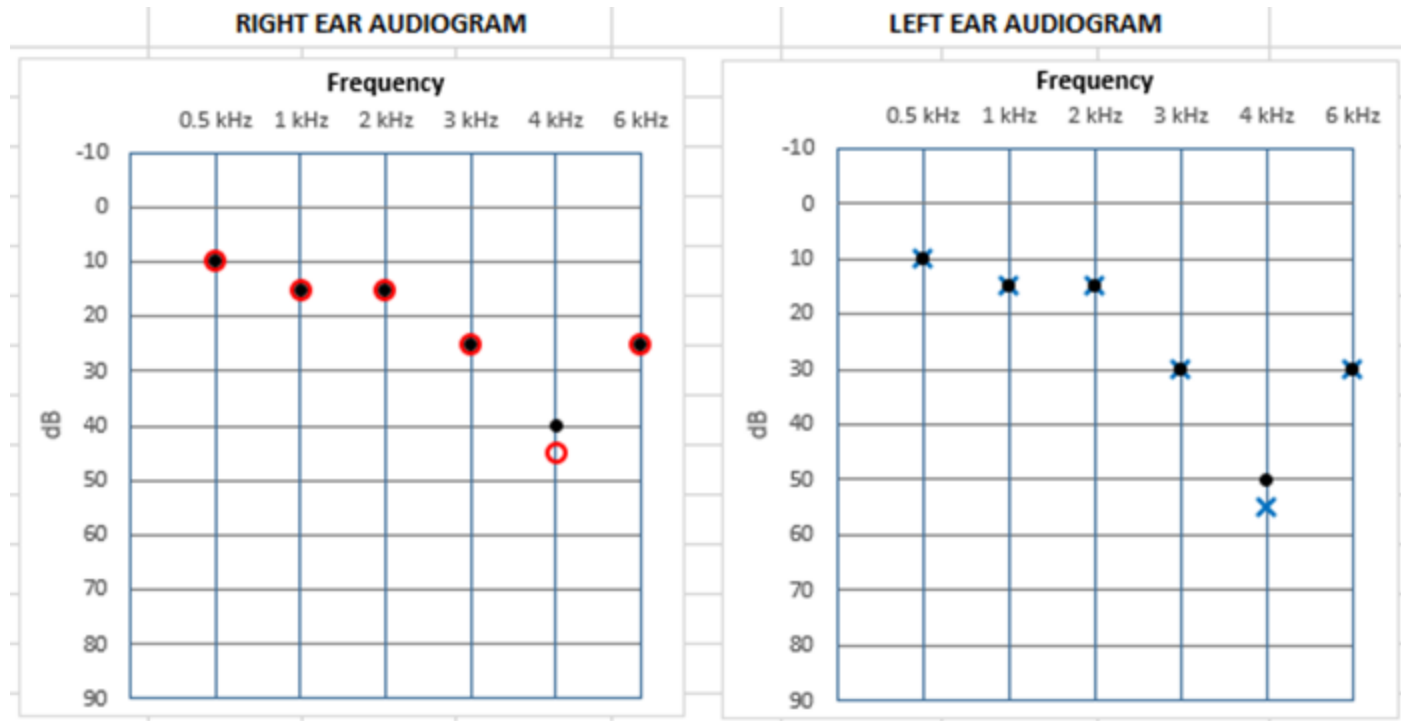
Normal?! (Hearing loss!?)



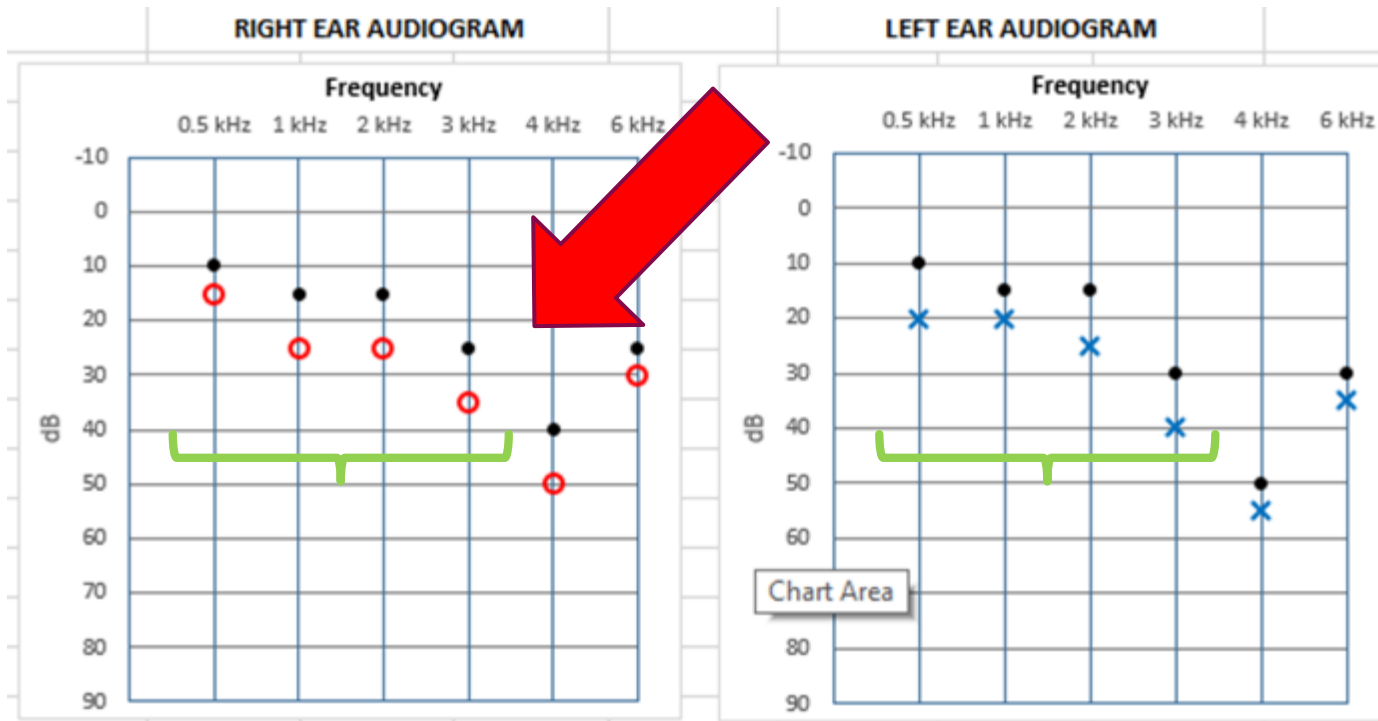
Standard Threshold Shift

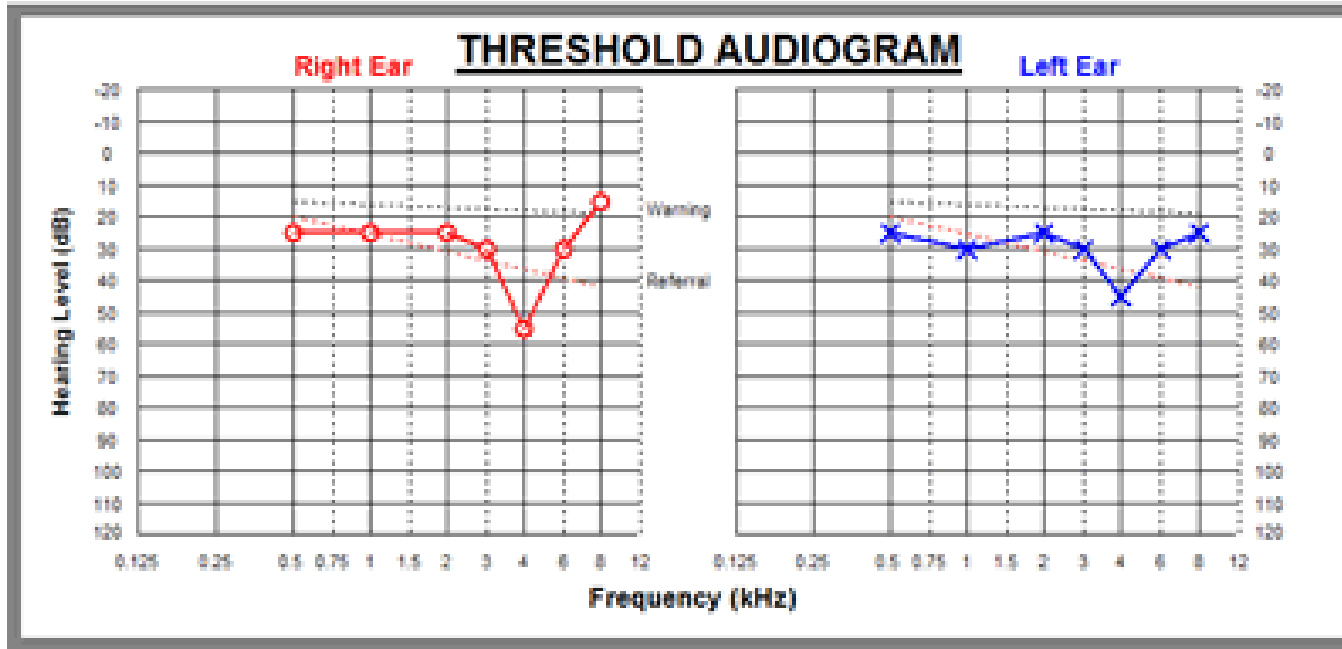


Question



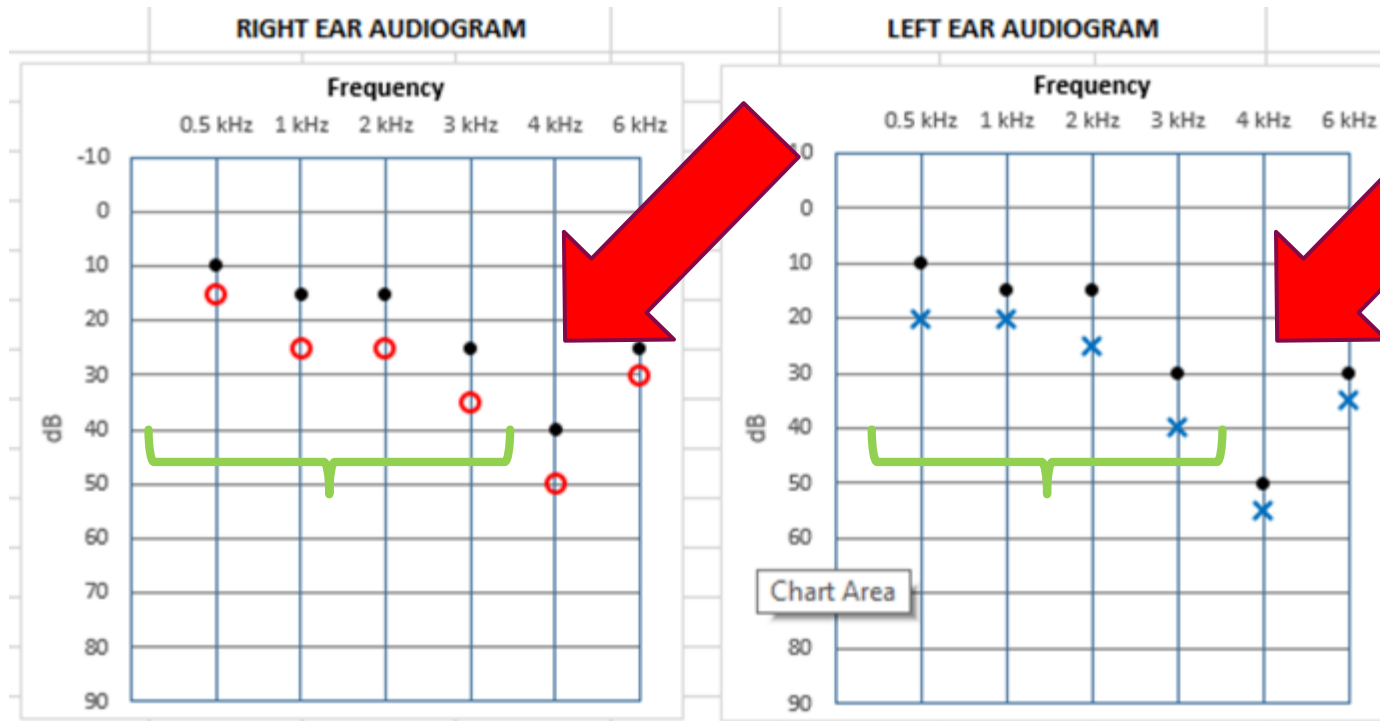
Hearing Impairment





Noise Induced Hearing Loss Pattern

ONIHL on Diagnostic Audiometry



Audiogram Interpretations & Recommendations

Normal & Hearing loss

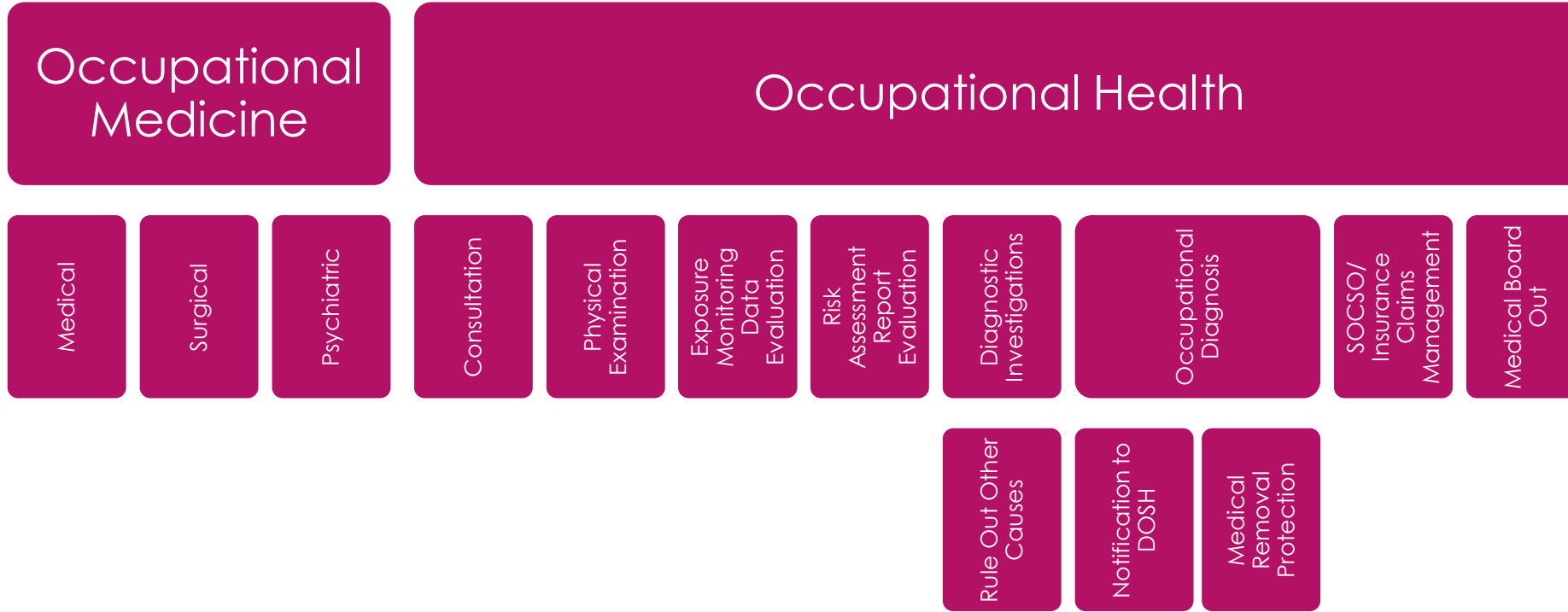
- Continue Hearing Conservation Program

I ACT for Occupational Noise Induced Hearing Loss (ONIHL)

- Hearing Impairment & Standard Threshold Shift \pm NIHL pattern
- Rule out other causes
- Reinforce Hearing Conservation Program
- “False Protection”
- Feedback Loop
- Occupational Health Case Management



Occupational Health Case Management



WHO?

The Official Portal of
DEPARTMENT of OCCUPATIONAL SAFETY and HEALTH
MINISTRY of HUMAN RESOURCES

GENERAL EMPLOYER COMPETENT PERSON/FIRM OOSH STAFF English

Search/Carian

MAIN ABOUT DOSH SERVICES LEGISLATION COMPETENCY OSH INFO STATISTICS CONTACT US

Main > Occupational Health Doctor

LIST OF COMPETENT PERSON

- ASSESSOR
- AUTHORISED GAS TESTER
- ENTRY SUPERVISOR
- HYGIENE TECHNICIAN I
- HYGIENE TECHNICIAN II
- INDOOR AIR QUALITY ASSESSOR
- LIFT COMPETENT PERSON
- MAJOR HAZARD COMPETENT PERSON

OCCUPATIONAL HEALTH DOCTOR

Show 10 entries Search: AZRUL

Idol. No/Name	Address	Tel No.	Fax No.	Expired Date
H230010X2001196	C-09-02 Plaza Paragon Point, Suk 9,			12/12/2014
Dr. Azrul Hozliman Bin (Dato' H) Abdullah	Pusat Bandar 5, 43650 Bandar Baru Bangi, Selangor azrul2010@gmail.com	03-89122900		11/12/2017

Showing 1 to 1 of 1 entries (filtered from 550 total entries)

First Previous 1 Next Last

OSHA S28;
Medical
surveillance
Occupation
al Health
Doctor

PERSONAL DATA PROTECTION ACT 2010

Processing of sensitive personal data

S40 (1)(b)(iv) for medical purposes and is undertaken by—

- (A) a healthcare professional; or
- (B) a person who in the circumstances owes a duty of confidentiality which is equivalent to that which would arise if that person were a healthcare professional;

Hearing Conservation Program

